

Trim Tab Installation Instructions

Part #HP-750/755/850

PARTS INCLUDED IN THIS KIT

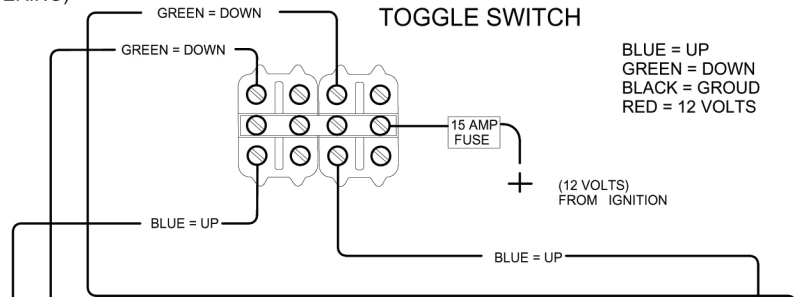
- (2) TRIM TABS
- (2) HYDRAULIC PUMPS.
- (4) INSIDE SS HYDRAULIC LINES (LENGTH SPECIFIED WHEN ORDERING)
- (1) DASH SWITCH
- (1) COMPLETE BOLT KIT FOR BOTH TRIM TABS

NOTE:

USE SILICONE SEALER, ON ALL TRIM LINES THROUGH TRANSOM FITTINGS AND BOLTS.

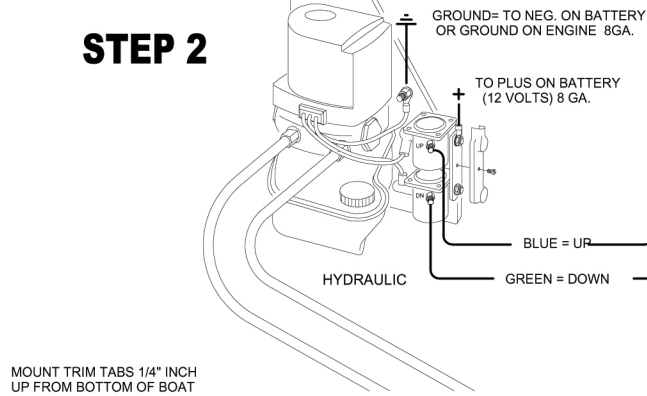
AFTER ALL HYDRAULIC LINES ARE INSTALLED AND TIGHTENED, FILL PUMP TO THE MAX WITH 30 WEIGHT MOTOR OIL FOR HYDRAULIC FLUID.

CYCLE BOTH TABS "UP AND DOWN" SEVERAL TIMES WHILE CHECKING FOR LEAKS (PUMP IS SELF-BLEEDING). REFILL HYDRAULIC TANK TO MAX.

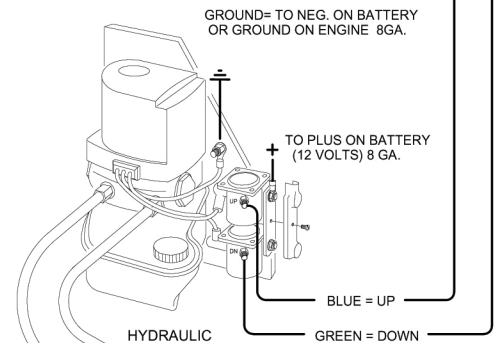
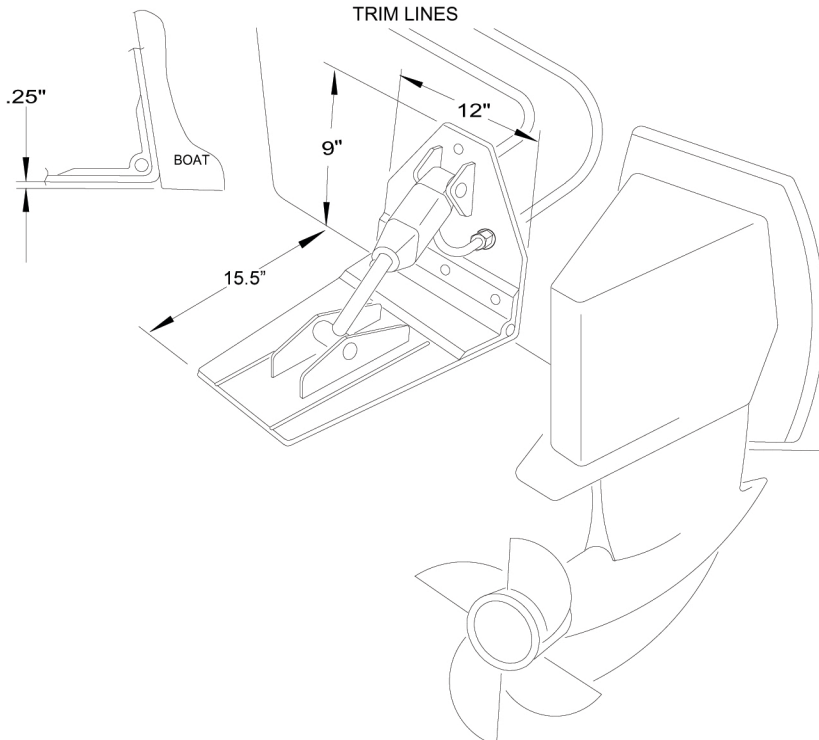


STEP 1

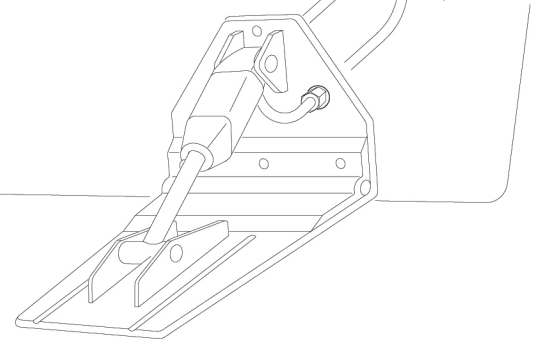
STEP 2



MOUNT TRIM TABS 1/4" INCH UP FROM BOTTOM OF BOAT



TRIM LINES



STEP 3