

Sponson Tab Installation Instructions

PARTS INCLUDED IN THIS KIT

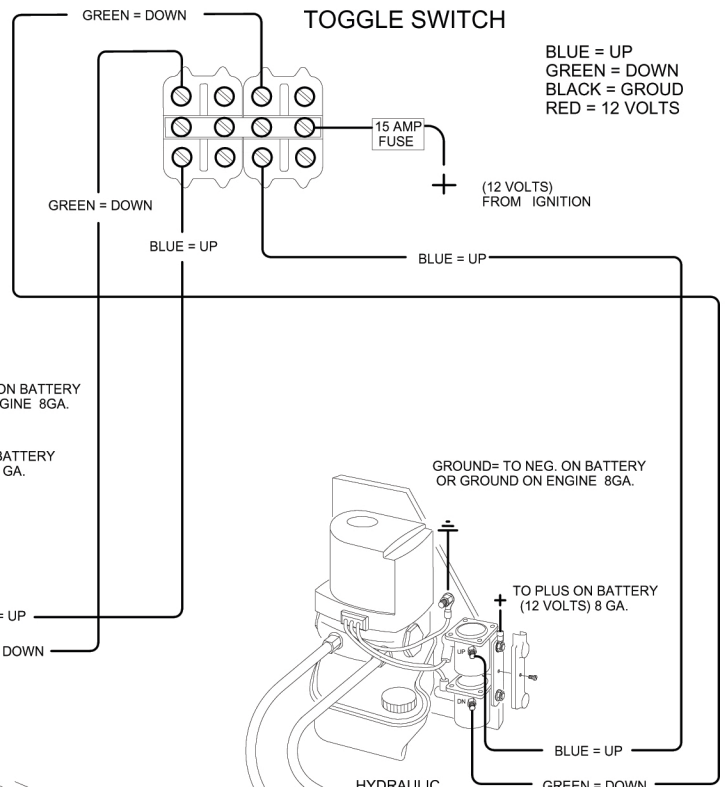
- (2) SPONSON TABS
- (2) HYDRAULIC PUMPS.
- (4) 30" SS HYDRAULIC LINES
- (1) TRICK DASH SWITCH
- (1) COMPLETE BOLT KIT FOR BOTH SPONSON TABS
- (2) BULKHEAD PLATES

NOTE:
USE SILICONE SEALER, ON ALL TRIM LINES THROUGH TRANSOM FITTINGS, AND BOLTS.

AFTER ALL HYDRAULIC LINES ARE INSTALLED AND TIGHTENED, FILL PUMP TO THE MAX WITH 30 WEIGHT MOTOR OIL FOR HYDRAULIC FLUID.

CYCLE BOTH TABS "UP AND DOWN" SEVERAL TIMES WHILE CHECKING FOR LEAKS (PUMP IS SELF-BLEEDING). REFILL HYDRAULIC TANK TO MAX.

STEP 1



STEP 2

*** CAUTION ***

MOUNT HYDRAULIC CYLINDER ON TRANSOM SO THAT MAXIMUM DOWN, DOES NOT EXCEED 2 1/2" INCHES BELOW THE RUNNING SURFACE OF THE BOAT AS SHOWN.

